


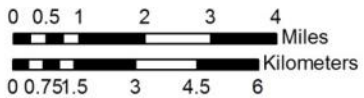
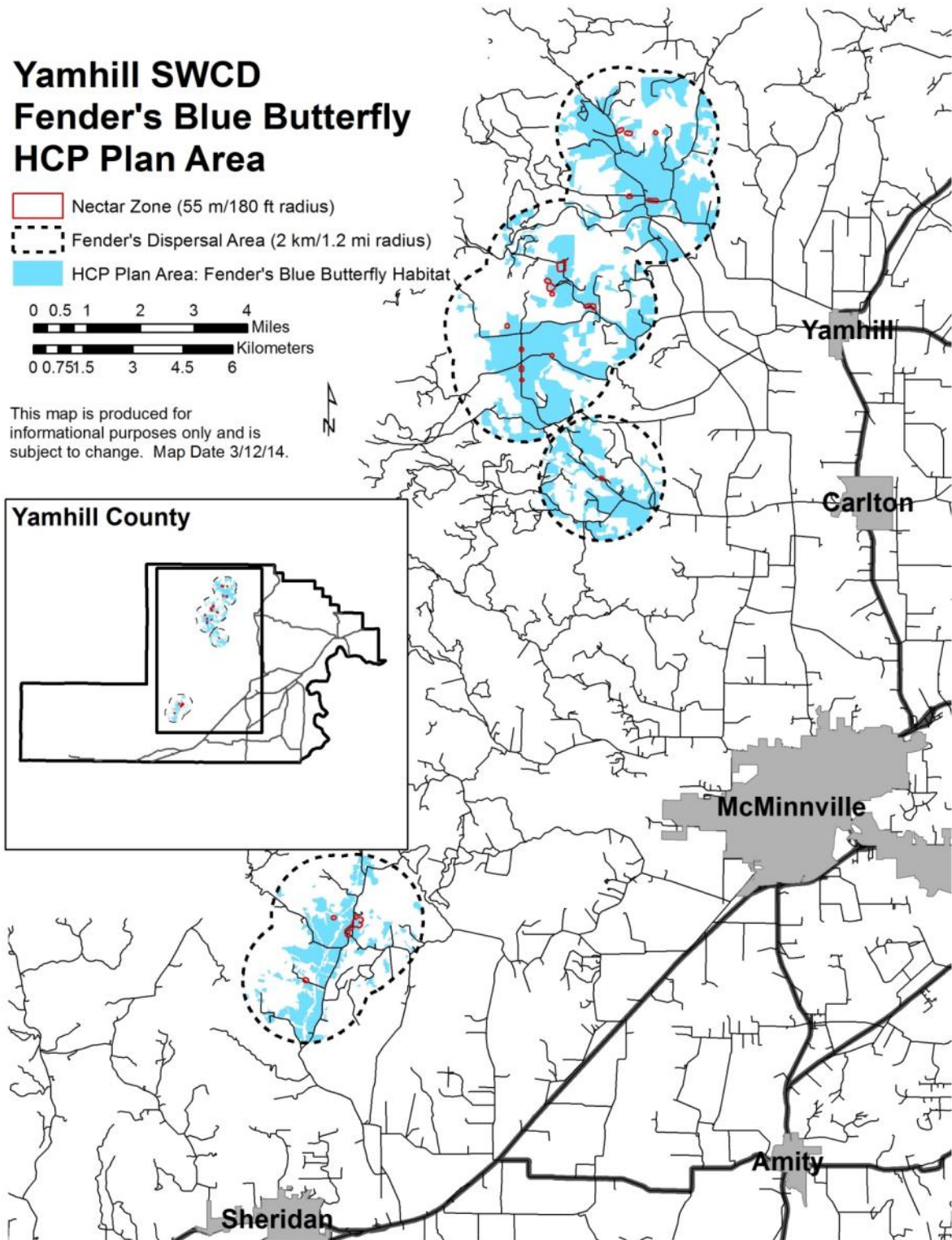
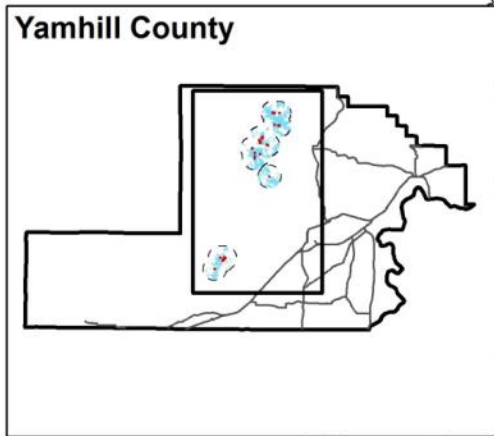


Yamhill SWCD Fender's Blue Butterfly HCP Plan Area

-  Nectar Zone (55 m/180 ft radius)
-  Fender's Dispersal Area (2 km/1.2 mi radius)
-  HCP Plan Area: Fender's Blue Butterfly Habitat



This map is produced for informational purposes only and is subject to change. Map Date 3/12/14.



The HCP Plan Area, which includes potential Fender's blue butterfly habitat on private lands outside roadside rights-of-way. The Nectar Zone is the portion of the Plan Area within 55 m (180 ft) of a currently known Fender's blue butterfly population, where nectar availability is important for adult butterflies.